

Revision B:

- MSZ-FH25VE-E1, MSZ-FH35VE-E1
and MSZ-FH50VE-E1 have been added.

Please void OBB623 REVISED EDITION-A.

INDOOR UNIT

PARTS CATALOG

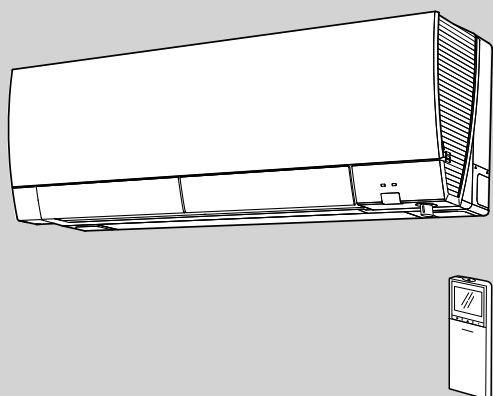
No. OBB623
REVISED EDITION-B

Models

MSZ-FH25VE - E1, E1

MSZ-FH35VE - E1, E1

MSZ-FH50VE - E1, E1



CONTENTS

1. RoHS PARTS LIST..... 2

SERVICE MANUAL (OBH623)

NOTE:

RoHS compliant products have <G> mark on the spec name plate.



Revision A:

- MSZ-FH50VE- [E1] has been added.

Revision B:

- MSZ-FH25VE- [ER1], MSZ-FH35VE- [ER1] and MSZ-FH50VE- [ER1] have been added.

1

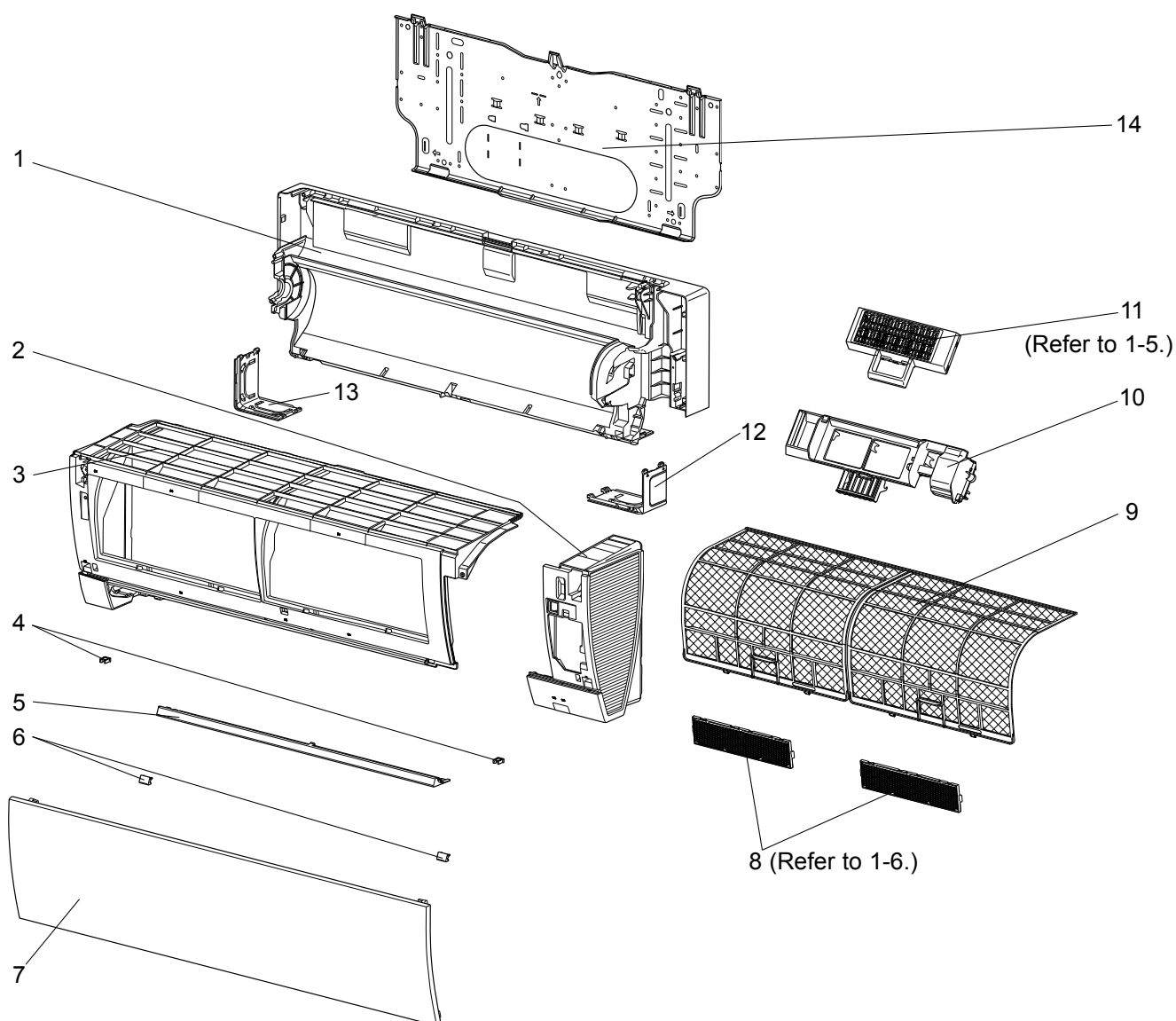
RoHS PARTS LIST

MSZ-FH25VE

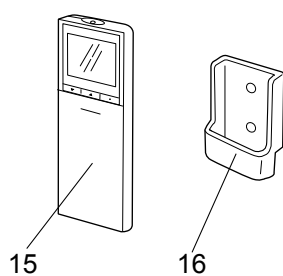
MSZ-FH35VE

MSZ-FH50VE

1-1. INDOOR UNIT STRUCTURAL PARTS



1-2. ACCESSORY AND REMOTE CONTROLLER



RoHS PARTS LIST

1-1. INDOOR UNIT STRUCTURAL PARTS

No.	RoHS	Part No.	Part name	Symbol in Wiring Diagram	Q'ty/unit						Remarks
					MSZ-FH						
					25VE- E1	25VE- ER1	35VE- E1	35VE- ER1	50VE- E1	50VE- ER1	
1	G	E12 J46 234	BOX ASSEMBLY		1	1	1	1	1	1	
2	G	E12 J44 085	PANEL RIGHT ASSEMBLY		1	1	1	1	1	1	
3	G	E12 J44 086	PANEL LEFT ASSEMBLY		1	1	1	1	1	1	
4	G	E12 F95 142	CATCH		2	2	2	2	2	2	2 PCS/SET
5	G	E12 J44 717	PANEL UNDER		1	1	1	1	1	1	
6	G	E12 J44 067	SCREW CAP		2	2	2	2	2	2	2 PCS/SET
7	G	E12 J44 010	FRONT PANEL		1	1	1	1	1	1	
8	G	—	AIR CLEANING FILTER (ELECTROSTATIC ANTI- ALLERGY ENZYME FILTER)		1	1	1	1	1	1	1 PC/SET MAC-2330FT-E
	G	—	AIR CLEANING FILTER (DEODORIZING FILTER)		1	1	1	1	1	1	1 PC/SET MAC-3000FT-E
9	G	E12 J44 100	AIR FILTER		2	2	2	2	2	2	1 PC/SET
10	G	E12 J44 775	AIR PURIFYING DEVICE SUPPORT		1	1	1	1	1	1	
11	G	E12 J44 774	AIR PURIFYING DEVICE		1	1	1	1	1	1	
12	G	E12 J44 975	CORNER BOX RIGHT		1	1	1	1	1	1	
13	G	E12 J44 976	CORNER BOX LEFT		1	1	1	1	1	1	
14	G	E12 J44 970	INSTALLATION PLATE		1	1	1	1	1	1	

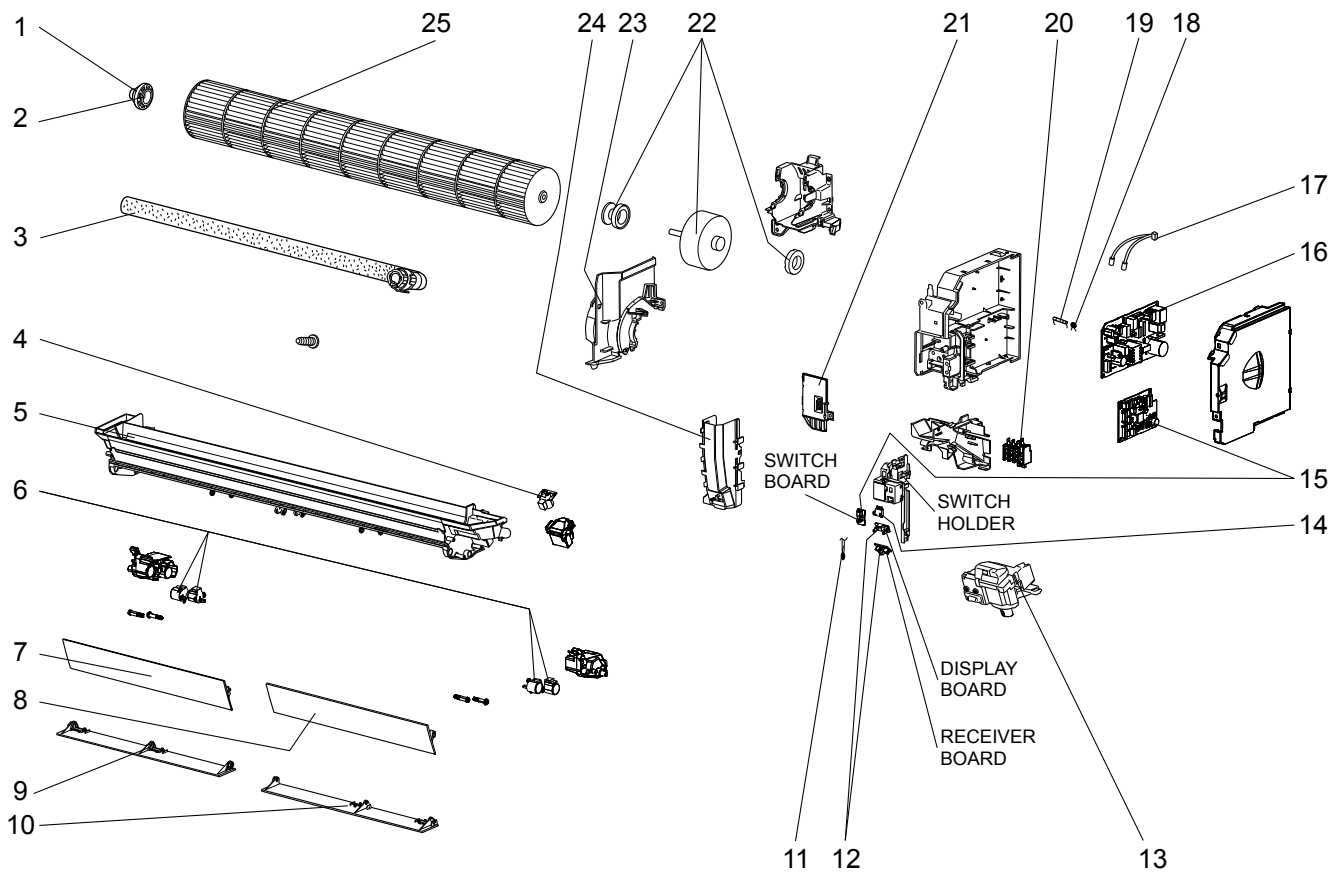
1-2. ACCESSORY AND REMOTE CONTROLLER

15	G	E12 J44 426	REMOTE CONTROLLER		1	1	1	1	1	1	SG13A
16	G	E12 F28 083	REMOTE CONTROLLER HOLDER		1	1	1	1	1	1	

RoHS PARTS LIST

MSZ-FH25VE MSZ-FH35VE MSZ-FH50VE

1-3. INDOOR UNIT ELECTRICAL PARTS AND FUNCTIONAL PARTS



RoHS PARTS LIST

1-3. INDOOR UNIT ELECTRICAL PARTS AND FUNCTIONAL PARTS

No.	RoHS	Part No.	Part name	Symbol in Wiring Diagram	Q'ty/unit						Remarks
					MSZ-FH						
					25VE- E1	25VE- ER1	35VE- E1	35VE- ER1	50VE- E1	50VE- ER1	
1	G	E12 751 509	BEARING MOUNT		1	1	1	1	1	1	
2	G	E12 001 504	SLEEVE BEARING		1	1	1	1	1	1	
3	G	E12 897 702	DRAIN HOSE		1	1	1	1	1	1	
4	G	E12 J44 303	VANE MOTOR (VERTICAL)	MV2	1	1	1	1	1	1	RIGHT & LEFT
5	G	E12 J44 235	NOZZLE ASSEMBLY		1	1	1	1	1	1	
6	G	E17 103 303	VANE MOTOR (HORIZONTAL)	MV1	4	4	4	4	4	4	UP & DOWN, 1 PC/SET
7	G	E12 J45 040	VANE UPPER (L)		1	1	1	1	1	1	
8	G	E12 J44 040	VANE UPPER (R)		1	1	1	1	1	1	
9	G	E12 J45 041	VANE LOWER (L)		1	1	1	1	1	1	
10	G	E12 J44 041	VANE LOWER (R)		1	1	1	1	1	1	
11	G	E12 J44 308	ROOM TEMPERATURE THERMISTOR	RT11	1	1	1	1	1	1	
12	G	E12 J44 468	DISPLAY AND RECEIVER P.C. BOARD		1	1	1	1	1	1	
13	G	E12 J44 391	DISPLAY AND i-see SENSOR ASSEMBLY ※1		1	1	1	1	1	1	
14	G	E12 J44 316	INTERLOCK SWITCH (AIR PURIFYING DEVICE)		1	1	1	1	1	1	
15	G	E12 M89 452	ELECTRONIC CONTROL P.C. BOARD ※2		1	1					
	G	E12 M90 452				1	1				
	G	E12 M91 452						1	1		
16	G	E12 J44 440	POWER P.C. BOARD		1	1	1	1	1	1	
17	G	E12 J44 307	INDOOR COIL THERMISTOR	RT12,RT13	1	1	1	1	1	1	
18	G	E12 B75 385	VARISTOR	NR11	1	1	1	1	1	1	
19	G	E12 A49 382	FUSE	F11	1	1	1	1	1	1	T3.15AL250V
20	G	E12 F95 375	TERMINAL BLOCK	TB	1	1	1	1	1	1	
21	G	E12 F95 784	V.A. CLAMP		1	1	1	1	1	1	
22	G	E12 J44 300	INDOOR FAN MOTOR ※3	MF	1	1	1	1	1	1	RC0J30-□□
23	G	E12 J46 333	MOTOR BAND		1	1	1	1	1	1	
24	G	E12 J44 541	WATER CUT		1	1	1	1	1	1	
25	G	E12 J44 302	LINE FLOW FAN		1	1	1	1	1	1	

※1 Including i-see SENSOR and i-see SENSOR MOTOR (MT).

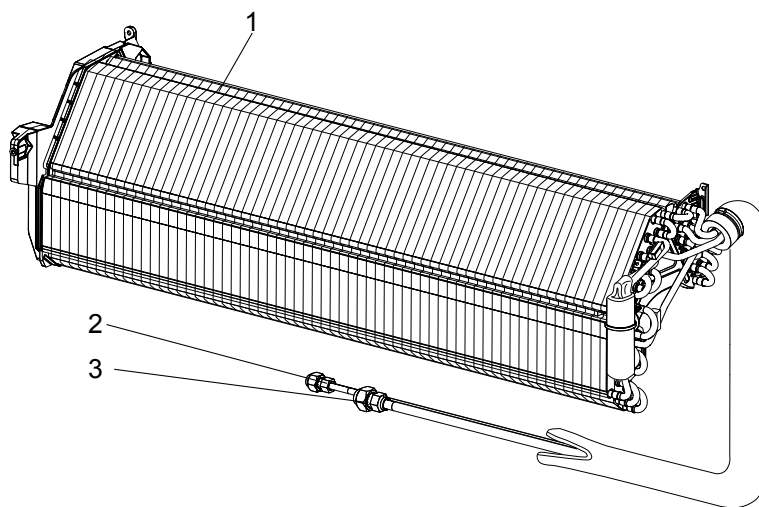
※2 Including SWITCH P.C. BOARD

※3 Including FAN MOTOR RUBBER MOUNT (2 PCS/SET)

RoHS PARTS LIST

MSZ-FH25VE MSZ-FH35VE MSZ-FH50VE

1-4. INDOOR UNIT HEAT EXCHANGER



No.	RoHS	Part No.	Part name	Symbol in Wiring Diagram	Q'ty/unit						Remarks
					MSZ-FH						
					25VE- E1	25VE- ER1	35VE- E1	35VE- ER1	50VE- E1	50VE- ER1	
1	G	E12 J44 620	INDOOR HEAT EXCHANGER		1	1	1	1			
	G	E12 J46 620							1	1	
2	G	E12 151 667	UNION (LIQUID)		1	1	1	1	1	1	ø6.35
3	G	E12 815 666	UNION (GAS)		1	1	1	1			ø9.52
	G	E12 155 666							1	1	ø12.7

RoHS PARTS LIST

1-5. AIR PURIFYING DEVICE

Every 3 months:

- Remove dirt by a vacuum cleaner.

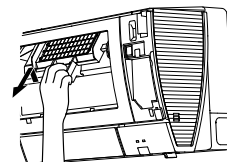
When dirt cannot be removed by vacuum cleaning:

- Soak the filter together with its frame in lukewarm water and rinse it.
- After washing, dry it well in shade.

NOTE 1: The air purifying device does not function for safety for a couple minutes after the operation starts or the front panel is opened/closed.

NOTE 2: Do not disassemble the air purifying device.

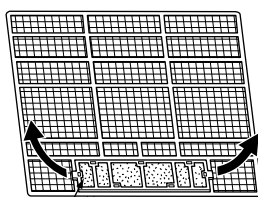
NOTE 3: Do not touch any parts other than the frame of the air purifying device.



1-6. AIR CLEANING FILTER

Air cleaning filter replacement

Pull to remove from the air filter



Air cleaning filter

- Electrostatic anti-allergy enzyme filter (Blue)
- Deodorizing filter (Black)

ELECTROSTATIC ANTI-ALLERGY ENZYME FILTER (BLUE)

Every 3 months:

- Remove dirt by a vacuum cleaner.

When dirt cannot be removed by vacuum cleaning:

- Soak the filter and its frame in lukewarm water before rinsing it.
- After washing, dry it well in shade. Install all tabs of the air filter.

Every year:

- Replace it with a new air cleaning filter for best performance.

NOTE 1: Clean the filters regularly for best performance and to reduce power consumption.

NOTE 2: Dirty filters cause condensation in the air conditioner which will contribute to the growth of fungi such as mold. It is therefore recommended to clean air filters every 2 weeks.

Model	Part No.
MSZ-FH25VE MSZ-FH35VE MSZ-FH50VE	MAC-2330FT-E

DEODORIZING FILTER (BLACK)

Every 3 months:

- Remove dirt by a vacuum cleaner, or soak the framed filter in lukewarm water (30 to 40 °C) for about 15 minutes. Rinse well.
 - After washing, dry it well in shade.
 - Deodorizing feature recovers by cleaning the filter.
- When dirt or smell cannot be removed by cleaning:**
- Replace it with a new air cleaning filter.

Model	Part No.
MSZ-FH25VE MSZ-FH35VE MSZ-FH50VE	MAC-3000FT-E

mitsubishi electric corporation

HEAD OFFICE: TOKYO BLDG., 2-7-3, MARUNOUCHI, CHIYODA-KU, TOKYO 100-8310, JAPAN

© Copyright 2012 MITSUBISHI ELECTRIC CORPORATION
Distributed in Dec. 2013. No. OBB623 REVISED EDITION-B
Distributed in Mar. 2013. No. OBB623 REVISED EDITION-A
Distributed in Jul. 2012. No. OBB623
Made in Japan

New publication, effective Dec. 2013
Specifications are subject to change without notice.